

MONTHLY MEMBERSHIP PROGRESS REPORT

LOCATION INDIA

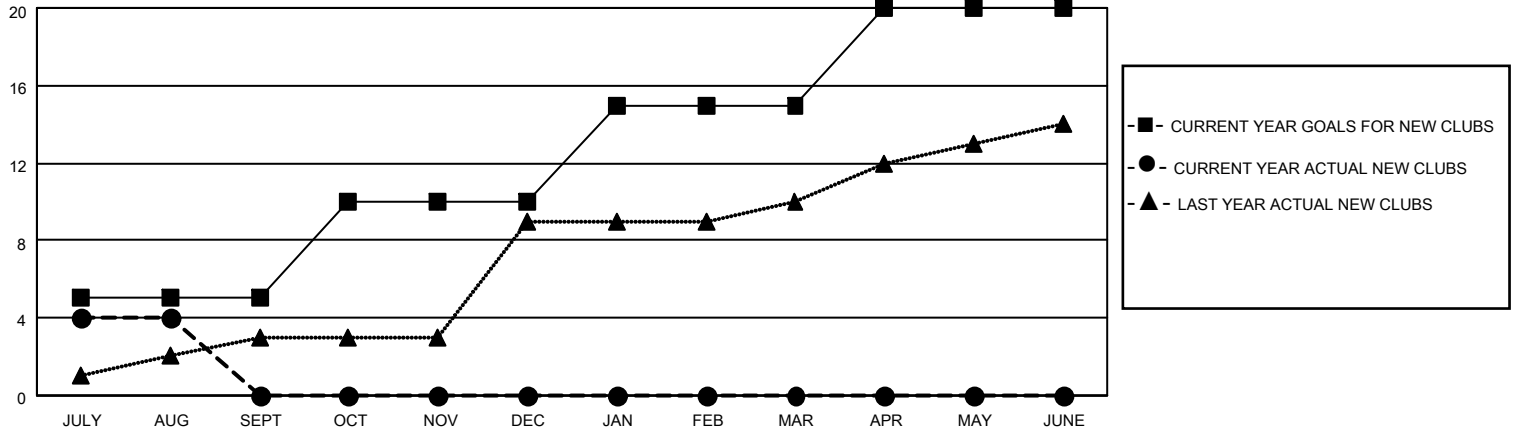
District 318 A

Results as of: 8/31/2021

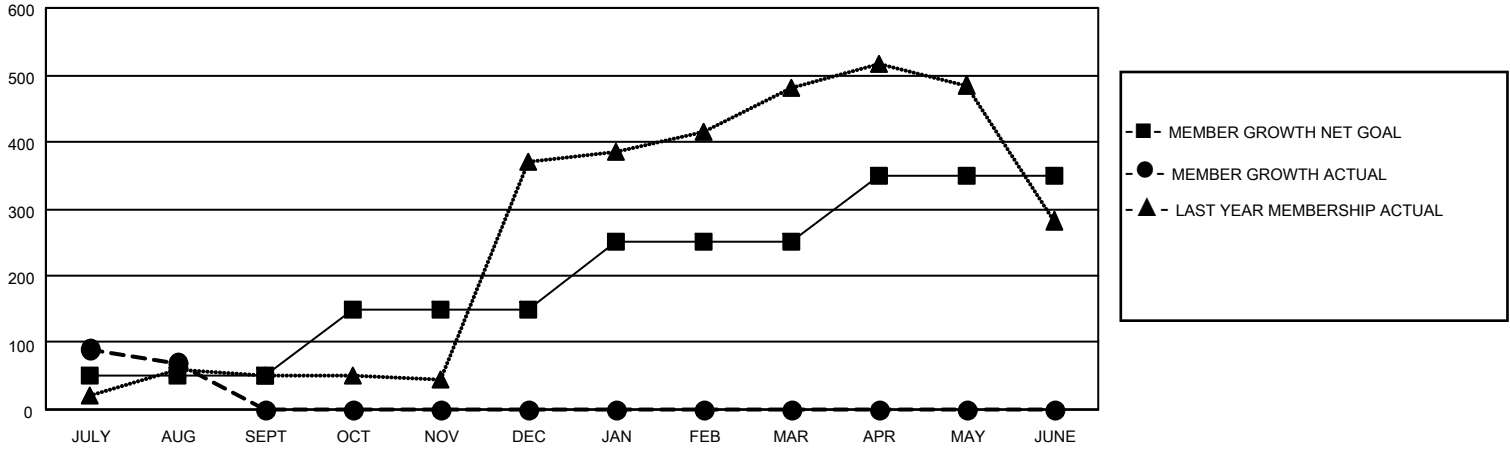
Clubs			
RESULTS FOR 2021-2022			
QUARTER	NEW CLUB GOAL	NEW CLUBS	DROPPED CLUBS
JULY/AUG/SEPT	5	4	1
OCT/NOV/DEC	5	0	0
JAN/FEB/MAR	5	0	0
APR/MAY/JUNE	5	0	0

Members			
RESULTS FOR 2021-2022			
QUARTER	MEMBER GROWTH NET GOAL	MEMBER GROWTH ACTUAL	DROPPED MEMBERS ACTUAL (including transfers)
JULY/AUG/SEPT	50	145	70
OCT/NOV/DEC	100	0	0
JAN/FEB/MAR	100	0	0
APR/MAY/JUNE	100	0	0

GOALS AND ACTUAL NEW CLUBS CUMULATIVE



GOALS AND ACTUAL MEMBERS CUMULATIVE



DROPPED CLUBS: 1

28 CLUBS OF 143 ADDED 1 OR MORE NEW MEMBERS

GENDER DISTRIBUTION

MALE	3,178 (74.13%)
FEMALE	1,109 (25.87%)
NON BINARY	0 (0.00%)
PREFER NOT TO ANSWER	0 (0.00%)

DROPPED MEMBERS

[CLICK HERE FOR CUMULATIVE MEMBERSHIP DATA](#)

DECEASED	4
CLUB CANCELLED	15
OTHER	51
TOTAL	70

TOTAL FAMILY UNIT MEMBERS 2,081

FAMILY MEMBERS PAYING HALF DUES 1,128